



WeatherMation LIVE

Weather Station Web Portal

Envirodata's WeatherMation Live service takes all the headache out of managing your data collection, storage and distribution.

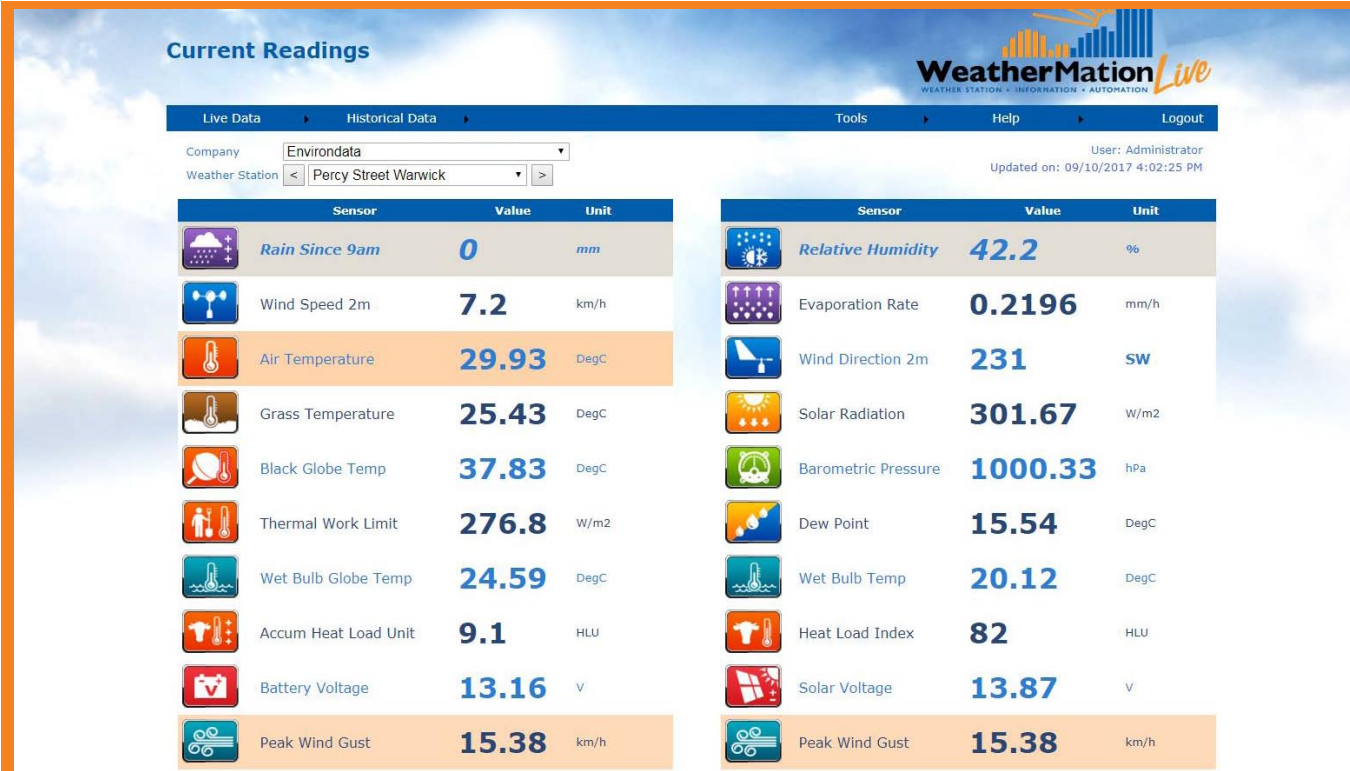
- **Envirodata manages data collection, storage and distribution for you**
- **Hosted on Envirodata's secure servers**
- **One or many Weather Stations**
- **One or many users with secure login access from any web browser**
- **Live & historical weather data**
- **Optional SMS and E-mail alerts**
- **Regular Notifications by SMS email or FTP**
- **Mobile device customised display**
- **Advanced user access control**
- **Online Reports, including Wind Rose & Dashboards**

Automated Data Collection

WeatherMation LIVE will

- Collect your weather data from all of your Envirodata weather stations. Typically every minute for Cellular connections
- Provide all of your Users secure access to live and historic weather data via our secure web portal
- Send SMS and E-mail alerts when your pre-set weather conditions are met. (Optional)
- Send SMS or E-mail notifications on your specified schedule. (Optional)

Weather data from all of your Envirodata weather stations is automatically collected and saved into WeatherMation's secure SQL database, held on our servers. You own the weather data and only your authorised users can access the site.



Current Readings

Company: Envirodata
Weather Station: Percy Street Warwick

User: Administrator
Updated on: 09/10/2017 4:02:25 PM

| Sensor | Value | Unit |
|----------------------|---------|------|
| Rain Since 9am | 0 | mm |
| Wind Speed 2m | 7.2 | km/h |
| Air Temperature | 29.93 | DegC |
| Grass Temperature | 25.43 | DegC |
| Black Globe Temp | 37.83 | DegC |
| Thermal Work Limit | 276.8 | W/m2 |
| Wet Bulb Globe Temp | 24.59 | DegC |
| Accum Heat Load Unit | 9.1 | HLU |
| Battery Voltage | 13.16 | V |
| Peak Wind Gust | 15.38 | km/h |
| Relative Humidity | 42.2 | % |
| Evaporation Rate | 0.2196 | mm/h |
| Wind Direction 2m | 231 | SW |
| Solar Radiation | 301.67 | W/m2 |
| Barometric Pressure | 1000.33 | hPa |
| Dew Point | 15.54 | DegC |
| Wet Bulb Temp | 20.12 | DegC |
| Heat Load Index | 82 | HLU |
| Solar Voltage | 13.87 | V |
| Peak Wind Gust | 15.38 | km/h |

User Based Access

Secure logins ensure only those people you allow to see each station will be able to do so.

Public access can be assigned to weather stations you wish to be viewed with no login required.

Live Weather Data

WeatherMation Live can provide your users access to current weather conditions immediately, any time from any browser.

For live data we will need a cellular data connection or an IP based connection via your network to each weather station. Satellite connected stations have much higher data costs and typically download 6 times per day, although more frequent updates are available on request.

Data Trends

The current readings option shows trend graphs for convenient display of immediate weather history.

The Dashboard reports can include these trend graphs as well as other key information.

The historic data display also includes live updating trend graphs, to enable quick viewing of longer trends on screen.

Historic Data

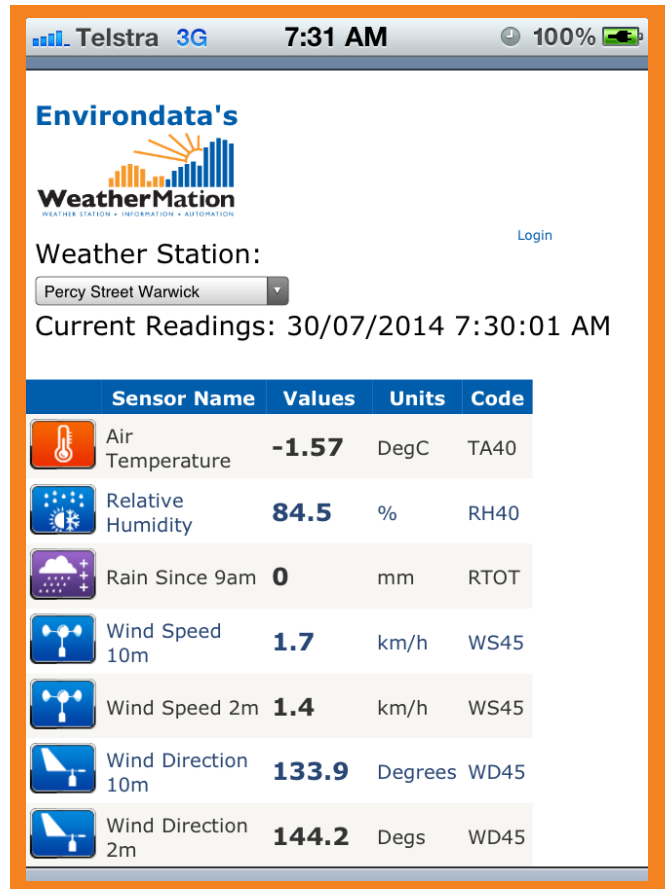
All memory data from your weather stations is held securely in the WeatherMation SQL database. You own your weather data.

Alerts & Notifications

When the weather impacts your operation, having an automated method for alerting your staff by e-mail and / or SMS will save you time and money.

WeatherMation's Alerts Module provides alerts by E-mail or SMS based on your weather data.

You can set 'Do Not Contact' times for your users and alert types, to make sure the people who have to know the weather data get notified when and how they need to.



Telstra 3G 7:31 AM 100%

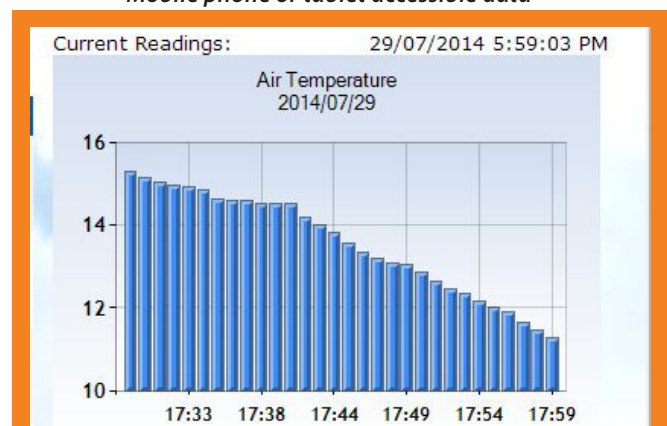
Envirodata's
WeatherMation
WEATHER STATION • INFORMATION • AUTOMATION

Weather Station: Percy Street Warwick

Current Readings: 30/07/2014 7:30:01 AM

| Sensor Name | Values | Units | Code |
|--------------------|--------|---------|------|
| Air Temperature | -1.57 | DegC | TA40 |
| Relative Humidity | 84.5 | % | RH40 |
| Rain Since 9am | 0 | mm | RTOT |
| Wind Speed 10m | 1.7 | km/h | WS45 |
| Wind Speed 2m | 1.4 | km/h | WS45 |
| Wind Direction 10m | 133.9 | Degrees | WD45 |
| Wind Direction 2m | 144.2 | Degs | WD45 |

Mobile phone or tablet accessible data




WeatherMation
WEATHER STATION • INFORMATION • AUTOMATION

Current Readings View Memory Data Download Memory Data About

Download Weather Station Memory Data

Weather Station: Percy Street Warwick

Memory: Daily Summary

Date From: 2014-05-04

Date To: 2014-05-12