



Envirodata MODBUS Interface Unit (MB10 - MB30)

Features:

- Industry standard MODBUS RS232 output
- Connect Envirodata's weather stations to your PLC or RTU
- Power the Weather Station along the communication cable

Applications:

- Automation
- SCADA connectivity
- Remote monitoring via your RTU network
- Mining Management
- Water Storage Management
- Irrigation Scheduling
- General Meteorology

Description:

Envirodata's MB10 - MB30 MODBUS connection units enable an industry standard interface to our weather stations.

The Modbus Gateway allows the easy connection of a PLC (Programmable Logic Controller), RTU (remote telemetry unit) or SCADA System to an Envirodata weather station.

Using the Modbus RTU (Binary) protocol, it enables a programmable controller to monitor, log and carry out actions based on wind speed, wind direction, temperature, rainfall, evaporation rates, as well as many other weather based variables.

The gateway is linked to the weather station's



Envirodata's MB10 MODBUS Converter

RS232 serial connection. The gateway polls the weather station for its readings every 10 seconds. These readings are stored in the Modbus holding registers of the Gateway.

A PLC or RTU connecting via RS232 and acting as a Modbus master is able to use Modbus Function 3 to read the contents of the Gateway's holding registers, which will contain the latest weather readings.

The connection is quick and easy with no custom scripting involved, which ensures the weather data is available to your SCADA or control system reliably and securely.

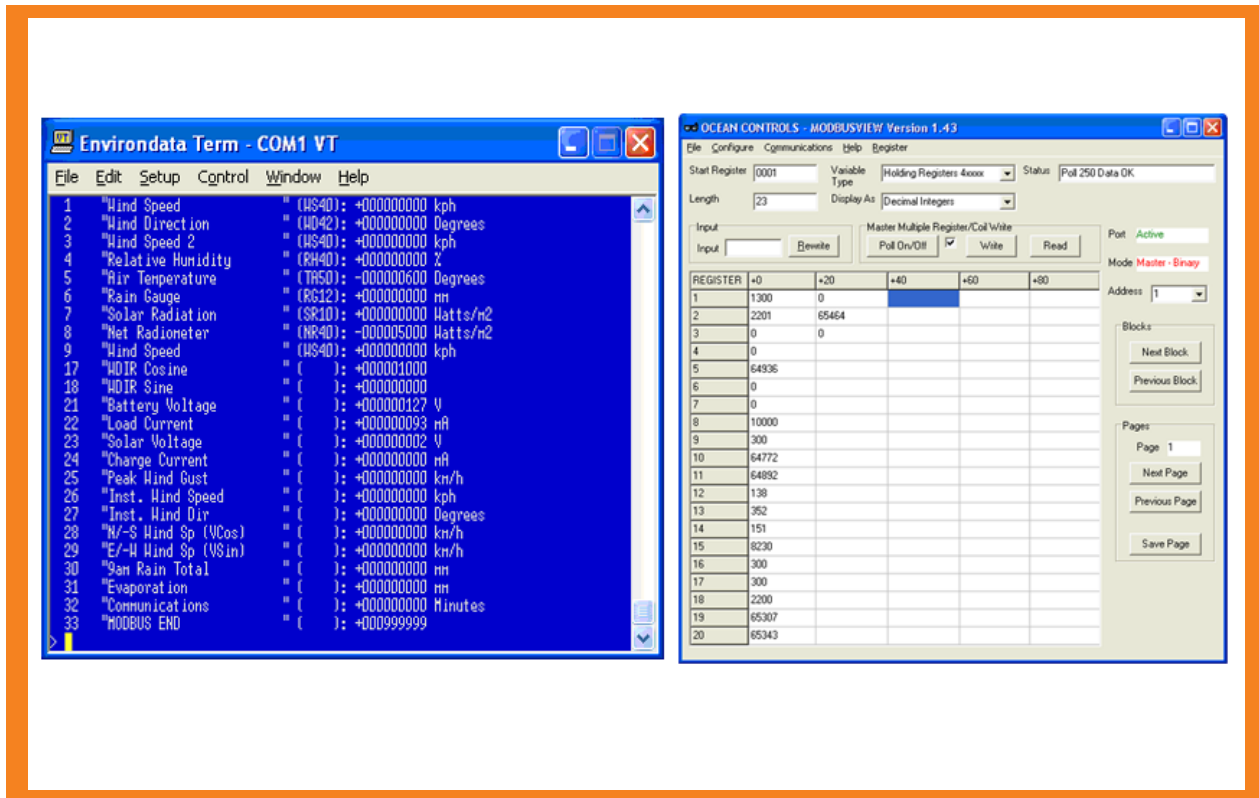
The MB10 MODBUS converter is designed to suit all Envirodata WeatherMaster 2000 (WM20) and Logging Rain Gauge (RG20) weather stations.

N.B. We recommend a quick factory modification to the input circuitry of the WM20 or RG20 if connecting to an existing station not supplied originally with an MB10.

The MB30 is designed to suit all Envirodata WeatherMate 3000, Weather Maestro and WeatherMaster 3000 weather stations.

Specifications:

- Connects all Envirodata weather stations to MODBUS network
- MODBUS RS232
- Selectable MODBUS Address 1-16
- 2400, 4800, 9600 Baud rates supported
- None, Odd and Even parity supported
- 10 second poll interval
- Power, Transmit and Receive indicator LEDs



Weather Data in Terminal program format (left) and MODBUS viewer format (right - not included in package)